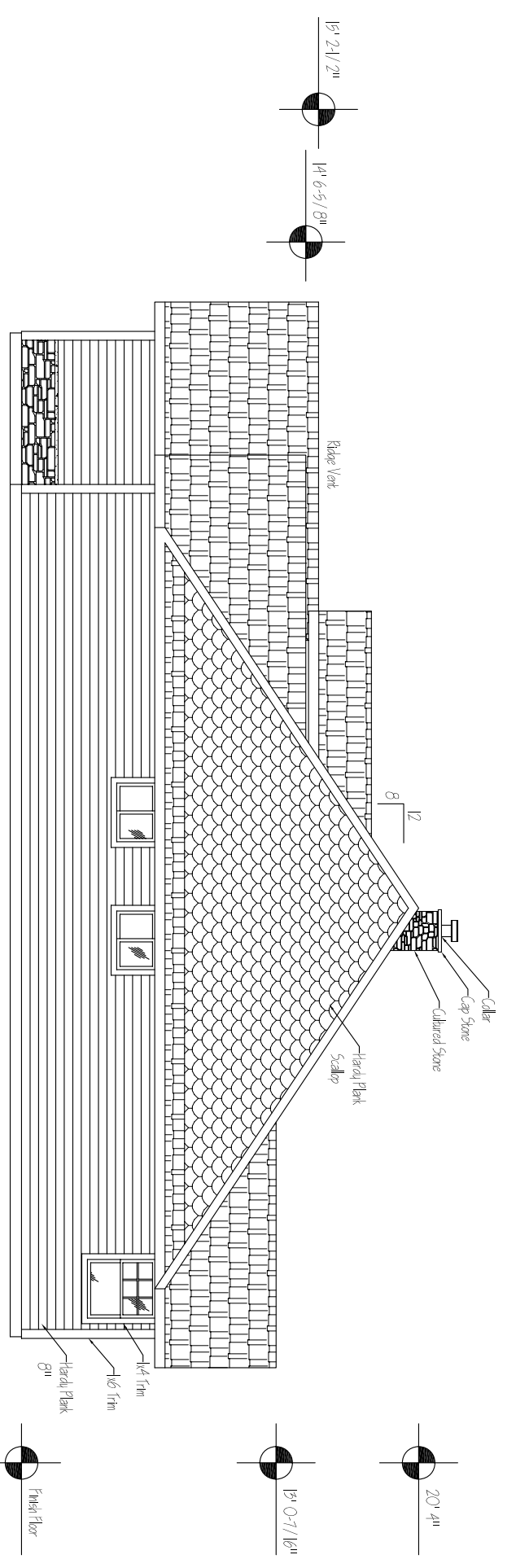


A2.3  
Rear Elevation  
1/8"=1'



A2.4  
Right Elevation  
1/8"=1'

DeMaris Restoration & Design, LLC  
 2101 Main St. Suite 213  
 Baker City, OR 97814  
 Ph 541-523-3596  
 Cell 307-250-2213

# Plan 107 , OR

REVISIONS:

File: 107  
 Drawn By: RD  
 Scale: 1/8"=1'  
 SHEET TITLE:  
 Elevations  
 SHEET #:

A2.3-4